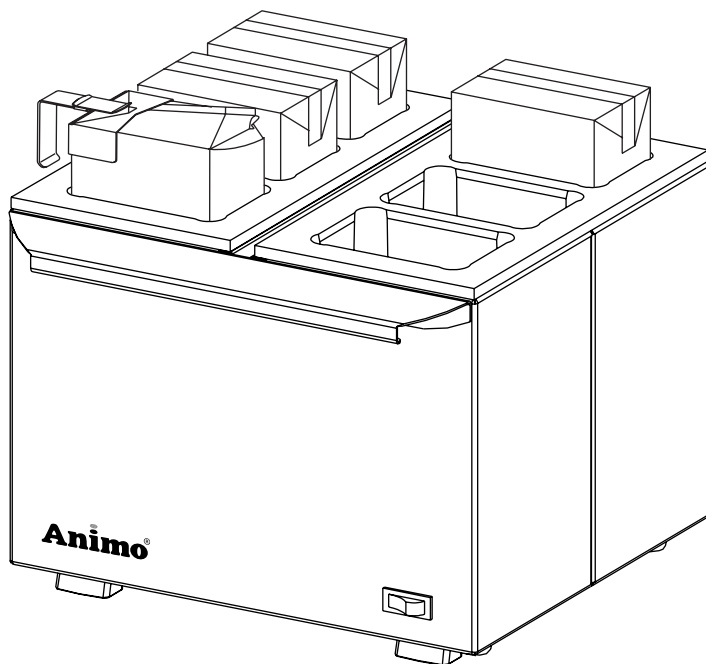


# Animo<sup>®</sup>

## MPW 6



(NL) Gebruiksaanwijzing

(GB) Manual

(D) Betriebsanleitung

(F) Mode d'emploi

Nederlands .....	1	<b>NL</b>
English.....	3	<b>GB</b>
Deutsch .....	5	<b>D</b>
Français.....	7	<b>F</b>



Dit apparaat voldoet aan de EMC-richtlijn 89/336/EEG, 92/31/EEG en de laagspanningsrichtlijn 73/23/EEG.

This appliance is in accordance with the EMC-Directive 89/336/EEC, 92/31/EEC and the low voltage directive 73/23/EEC.

Dieses Gerät wurde in Übereinstimmung gemäß EMV-Richtlinie 89/336/EWG, 92/31/EWG und Niederspannung-Richtlinie 73/23/EWG gebaut.

Cet appareil est conforme à la directive d'EMC 89/336/CEE, 92/31/CEE et à la directive de basse tension 73/23/CEE.

Animo behoudt zich het recht voor om onderdelen op elk gewenst moment te wijzigen, zonder voorafgaande of directe kennisgeving aan de afnemer. De inhoud van deze handleiding kan eveneens gewijzigd worden zonder voorafgaande waarschuwing. Deze handleiding is geldig voor de machine in standaarduitvoering. Animo kan derhalve niet aansprakelijk worden gesteld voor eventuele schade voortvloeiende uit van de standaard uitvoering afwijkende specificaties van de aan u geleverde machine. Voor informatie betreffende afstelling, onderhoudswerkzaamheden of reparaties waarin deze handleiding niet voorziet, wordt u verzocht contact op te nemen met de technische dienst van uw leverancier. Deze handleiding is met alle mogelijke zorg samengesteld, maar Animo kan geen verantwoording op zich nemen voor eventuele fouten in dit boek of de gevolgen daarvan.

Animo has the right to change parts of the machine at any time without advice or direct announcements to the client. The contents of this manual can also be changed without any announcements. This manual is to be used for the standard model/type of the machine. Thus Animo cannot be held responsible for any damage resulting from the application of this manual to the version delivered to you. For extra information on adjustments maintenance and repair, contact the technical department of your supplier. This manual has been written very carefully. However, Animo cannot be held responsible neither for mistakes in the book nor for their consequences.

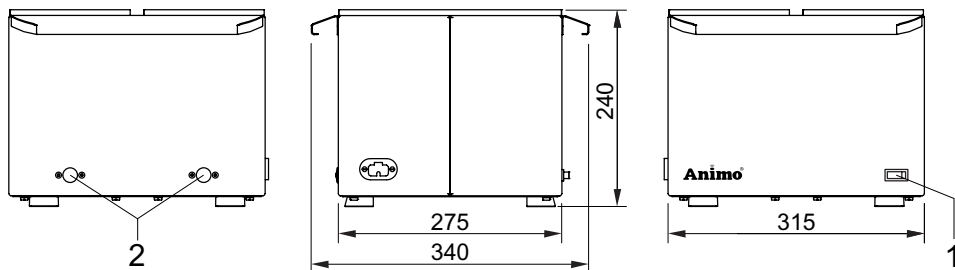
Animo behält sich das Recht vor, Einzelteile ohne vorherige Bekanntgabe an den Kunden zu ändern. Der Inhalt dieser Anleitung kann ebenfalls ohne vorherige Bekanntgabe geändert werden. Diese Anleitung gilt für die Standardausführung der Maschine. Animo haftet daher nicht für Informationen über Einstellungen, Wartungsarbeiten oder Reparaturen, die nicht in dieser Anleitung enthalten sind. Wenden Sie sich gegebenenfalls bitte an den Kundendienst Ihres Händlers. Diese Anleitung wurde mit größtmöglicher Sorgfalt zusammengestellt. Animo haftet jedoch nicht für etwaige Fehler in dieser Anleitung oder für die Folgen solcher Fehler.

Animo se réserve le droit de modifier les pièces à n'importe quel instant, sans avis préalable et sans obligation de notification au client. Le contenu de ce manuel est également sujet à modification sans avis préalable. Ce manuel s'applique au modèle standard de la machine. Par conséquent, Animo n'est pas responsable pour les dommages éventuels découlant de l'application de ce manuel aux modèles non standard. Pour les renseignements sur certains réglages, les travaux d'entretien ou réparations qui ne seraient pas traités dans ce manuel. Animo ne peut être tenu responsable des erreurs éventuelles ni des dommages qui en découleraient.

This instruction was designed for users of the Animo Milk pack heater, type 6 MPW. These operating instructions should be read carefully to ensure that your machine is operated correctly and safely.

## 1. INSTALLATION

The appliance is switched on by the main switch (1), which also lights up. The 6 MPW (with initial batch of 6 packs) will take about 50 minutes to heat up from cold to an operating temperature of approx. 75°C. Each subsequent pack will take about 30 min. (to reach a temperature of approx. 60°C), which means a maximum capacity of 12 litres per hour.



1 = Main switch

2 = Adjustable thermostat (2x)

Heating times are;

Heating time starting with a cold appliance	: 30 Min. 50°C	50 Min. 75°C	
Heating time after pre-heating the appliance	: 20 Min. 50°C	30 Min. 60°C	40 Min. 75°C

The MPW was been set to approx. 75°C. The temperature is adjustable (max. 85°C) by means of a thermostat (2) at the back side, covered by a sealing cap. This sealing cap has been snapped into position in the casing and can be removed with a small screwdriver.



### WARNING

- \* Always remove the plug from the socket if the machine has to be opened for repair or maintenance.
- \* Always plug the machine into an earthed wall socket.
- \* Do not submerge or spray the machine.
- \* If the machine is not used it is advisable to remove the plug from the socket.
- \* Have all repairs carried out by a specially trained technician.

## 2. MAINTENANCE OF THE 6 MPW

As liquids are heated up in their original packs, maintenance is kept to a minimum. Dirt leakage spills, etc. can be removed with the usual cleaning agents (do not use soda). No maintenance is necessary for the appliance itself.

N.B.: Do not forget that this is a heating appliance. This means that the top surface will become as hot as the packs themselves (approx 75°C).

### 3. PACK HOLDER

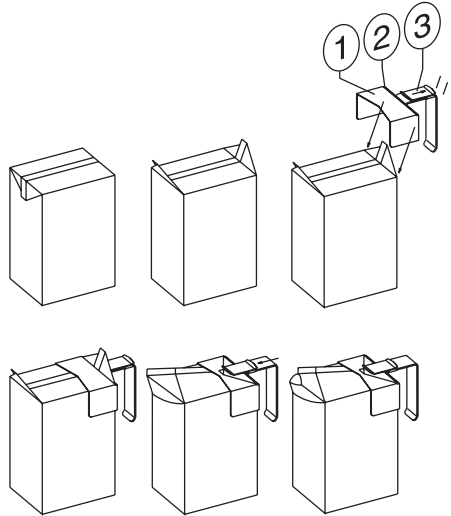
Appliance is supplied with two pack holders, to enable the warm packs to be removed without having to use the hands and also as a pouring aid.

### 4. OPERATION

Both flaps of packs must be pulled free: the dotted line indicates the spout; the other flap is for clamping the pack in position.

The clamping flap is inserted into the groove (2) of the holder (1) after which the clamping device is slid over the flap. The pack is now firmly fixed in place and can be picked up and poured with.

The appliance is supplied with two pack holders. When used on an open carton, this carton will first have to be replaced. Using the cartons in sequence and adopting the habit of using the holder on one side of the appliance only will ensure that packs are not kept too long at operating temperature, resulting in loss of flavour (depending on composition of air).



# **Animo<sup>®</sup>**

## **MPW 6**

Animo B.V. Headoffice  
Dr. A.F. Philipsweg 47  
P.O. Box 71  
9400 AB Assen  
The Netherlands  
Tel. no. +31 (0)592 376376  
Fax no. +31 (0)592 341751  
E-mail: [info@animo.nl](mailto:info@animo.nl)  
Internet: <http://www.animo.eu>